



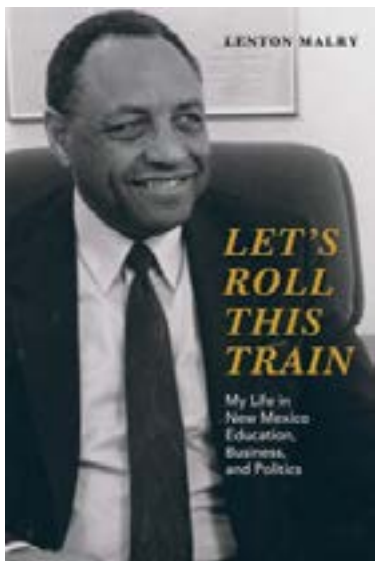
# LOS ALAMOS

## Student Services Newsletter

February 2024

### BLACK HISTORY MONTH

Black History Month has been officially recognized in the United States since 1976, when President Gerald Ford called upon Americans to “seize the opportunity to honor the too-often neglected accomplishments of Black Americans in every area of endeavor throughout our history.”



This year we want to highlight the exceptional achievements of Dr. Lenton Malry, the first Black person to earn a Ph.D. from The University of New Mexico in education and the first to be elected to the New Mexico State Legislature. As a politician, Dr. Malry is best known as an

advocate of public education, particularly the need to support children early in childhood. While we take universal kindergarten for granted now, it was courageous advocates like Dr. Malry who took a stand against the prevailing wisdom who made it possible.

Dr. Malry’s advocacy spanned decades, even acting as director as New Mexico’s Human Rights Division for a while. For his tireless dedication to improving the lives of others, he received The University of New Mexico’s Living Legend Award in 2007. You can read more about Dr. Malry’s decades of advocacy and achievement in his award-winning autobiography, *Let’s Roll This Train*, which was published in 2016.

### DEPARTMENT OF ENERGY’S MINORITY EDUCATIONAL INSTITUTION STUDENT PARTNERSHIP PROGRAM



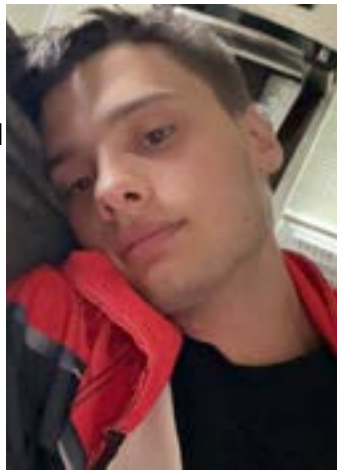
MEISPP offers a 12-week paid summer internship for students of all majors. Opportunities include remote, on-site, and hybrid. To be eligible, students must be over 18, US citizens, and have a cumulative GPA of 3.0 or higher. Students will be placed with subject matter experts depending on the area of study. For students who need to relocate for the summer position, a housing and travel stipend is provided. Interested students are encouraged to attend an application workshop on Feb. 1 to learn more about the program and how to strengthen your application. Please visit the website for more information: <https://orise.orau.gov/MEISPP/>. Applications due February 15, 2024.

### FOLLOW US



## STUDENT SPOTLIGHT: KRISTIAN GODT

**Hometown and high school:** Hampton Virginia, homeschooled  
**Major:** Political Science  
**Plans for after graduation:** To go to law school  
**Dream Job:** Congressman  
**Hobbies:** Longboard, skateboard, video games  
**Favorite sports teams:** Steelers  
**Top of my playlist:** currently, "Trauma" by BoyWithUke  
**Favorite class:** So far, English  
**Red or green:** Green



## MONTHLY CULTURAL HIGHLIGHT: THE YEAR OF THE DRAGON



*We are introducing a new monthly feature highlighting a cultural holiday or practice.*

February 10 marks the Lunar New Year (also called "Chinese New Year"). This is a good time to clean your house and rid yourself of clutter to make room for good things to come in the new year. Many people also make noise by banging drums or setting off fireworks to drive away bad luck and invite the protection of good spirits.

The coming year will be the Year of the Dragon, which many people view as the most auspicious of the 12-Year cycle of the Chinese zodiac. In fact, many families try to plan the birth of children to take place this year, sometimes leading to crowded conditions at hospitals in countries that follow the Chinese zodiac. People born under the sign of the dragon are said to be natural leaders who obtain power through the affection of their followers, not by force or furtive means.

More specifically, it will be the Year of the Wood Dragon, which we have not seen since 1964. Wood dragons are associated with spring and with new beginnings, so start thinking of positive changes you want to make!

### IMPORTANT FEBRUARY DATES

**February 2:** Last day to DROP without "W" grade and 100% tuition refund on LoboWEB.

Last day to ADD sections and/or CHANGE credit hours with completed form. Late fees apply.

**March 10 -7:** Spring Break (Campus open)

**April 12:** Last day to withdraw without approval of Student Services

**May 2:** Last day to withdraw with approval of Student Services

**May 6 -11:** Final Examinations

**May 9:** UNM-Los Alamos Commencement



**ARE YOU INTERESTED  
IN A CAREER AT LANL?**

LANL Representatives are  
coming to UNM-Los Alamos!

Join us on campus for exclusive insights into Los Alamos National Laboratory internships and job openings, straight from the experts.

**OPEN TO ALL MAJORS!**

**FEBRUARY 8**

2:00 pm

Building 2

Room 230 (Lecture Hall)



505-661-4682

cic@unm.edu

The University of New Mexico-Los Alamos is committed to the recognition and the proactive pursuit of compliance with the Americans with Disabilities Act of 1990 (ADA). The University makes reasonable accommodation for religious observances, national origin practices of a student and to the known physical or mental limitations of a qualified student, unless such accommodations have the end result of fundamentally altering a program or service or placing an undue hardship on the operation of the University. Qualified students with disabilities should contact Student Services for information regarding accommodations in the academic and/or employment setting. If you have a special need and require an auxiliary aide and/or service, please contact Student Services at (505) 662-5919.

# STUDENT SERVICES

Student Services is a central hub of information for prospective, current, and former students to find assistance and answers to questions about admissions, financial aid, registration, academic advising, career services, and other resources on campus.



**Kathryn Vigil**  
Director, Student Affairs  
505-661-4688  
[kaguilar@unm.edu](mailto:kaguilar@unm.edu)



**Coco Rae**  
Student Success Manager  
505-661-4692  
[cocorae@unm.edu](mailto:cocorae@unm.edu)



**Jenny Duran**  
Financial Aid Officer  
505-662-0341  
[jenduran@unm.edu](mailto:jenduran@unm.edu)



**Jef Bateman**  
Sr. Student Success  
Specialist  
505-553-3406  
[jbateman1@unm.edu](mailto:jbateman1@unm.edu)



**Grace Willerton**  
Sr. Student Success  
Specialist  
505-663-3402  
[gwillert@unm.edu](mailto:gwillert@unm.edu)



**Brittany Carpenter**  
Community Internship  
Collaboration (CIC)  
Coordinator  
505-661-4682  
[brcarpenter@unm.edu](mailto:brcarpenter@unm.edu)



**Lori Tepley**  
Branch Registrar  
505-662-0332  
[ltepley@unm.edu](mailto:ltepley@unm.edu)



**Ingrid Goldsmith**  
Sr. Student Enrollment  
Associate  
505-661-4698  
[lgoldsmith@unm.edu](mailto:lgoldsmith@unm.edu)

## Admissions

The Office of Admissions can help if you have questions or are ready to apply to UNM-Los Alamos. The Office of Admissions can provide application instructions for degree-seeking, non-degree, dual credit/concurrent, international, senior, or transfer students. Complete details can be found on the Admissions page: [losalamos.unm.edu/admissions](https://losalamos.unm.edu/admissions).

## Financial Aid

The Office of Financial Aid provides information on financial resources available to degree-seeking students. These resources may include scholarships, grants, and loans from the federal or state government, independent organizations, and/or UNM-LA itself. UNM-LA determines financial aid eligibility from the FAFSA, so please take time to file this document online every year. Don't assume you are ineligible—there are many opportunities to pursue.

## Enrollment Services

The Office of Enrollment Services at UNM-LA processes high school and other college transcripts of current and former students. The registrar can also answer questions about dual credit and concurrent enrollment, VA benefits, and graduation requirements.

## Academic Advising & Student Success

Academic advisors can provide guidance through the admission process, degree and course selection, and registration. Advisors also assist with changing a major, following up instructors' early alerts, filing graduation petitions, and planning for baccalaureate work. Advisors can also help resolve registration errors. Degree-seeking students must meet with an advisor before registering for each semester to check that their chosen classes will continue to make progress toward their degrees and to have their advising hold lifted. The Director of Student Affairs coordinates ADA accommodation services for students, and oversees academic advisement, student retention, and success initiatives.

## Career Services

Student Services offers career services to assist students with self-exploration, selecting a major, and opportunities for gaining experience in their chosen fields. Career services also include resume reviews, internship connections, job fairs, quantifying or translating skills, sharing job postings, and building connections between employers and our students.



# LOS ALAMOS

## Newsletter Supplement

### *The World Beautiful*

“After all, it rests with ourselves as to whether we shall live in a World Beautiful” – Lilian Whiting, *The World Beautiful* (1894)

On Sunday, February 18th at 3 pm SALA will present a multimedia staged reading by Los Alamos artist and UNM-LA student Anna Yarrow. Anna is a LANL Foundation Scholar who plans on earning two degrees this fall. She has been a caretaker for David Brown, a nearly six-decade resident of Los Alamos known locally as “The Mountaineer,” for about five and a half years.



ANNA YARROW

Anna spent her early years in Santa Monica, California and Portland, Oregon. She was home schooled and feels that she was overly sheltered when she was growing up. She has sought to broaden her horizons since, having lived in the Sultanate of Oman, South Africa, Guyana, Santa Fe, and Los Alamos. Mostly, she worked as a wedding photographer and an au pair. She says, “Other people feel like they have

to make plans; they need security and a retirement account. Me, I just live life.” Anna’s improvisational approach to life allowed her to follow a twisting path when a series of serendipitous events led her to Los Alamos.

#### COMING TO LOS ALAMOS

Art is very important to Anna, and she was drawn to New Mexico largely because of the art of Georgia O’Keefe. While O’Keefe was a painter, Anna’s preferred medium is photography. Anna had some success here, even serving as an Artist-in-Residence at El Zaguán in Santa Fe. After a couple years, though, rent increases made this position unsustainable, so she left without anything to fall back on. As luck would have it, the brakes on her 25-year-old Ford Explorer failed, so she had to order a Lyft. She was picked up by a mysterious man she calls “Marty the Lyft driver,” who is not even a Santa Fe resident. He gave her a ride as he was passing through town. He told her she should move to Los Alamos and enroll her daughter in the middle school; he even told her where to look for an apartment.

It is not clear whether to characterize her decision as the act of a free spirit or a woman who listens to the guiding voice of fate, but she came to Los Alamos without a job, and really without any clear leads.

Once here, she asked around about possible leads, and acquaintances sent her a Facebook ad, placed by the Mountaineer’s son, asking for a hiking companion for his father. After three mutual friends who knew the Mountaineer encouraged her to apply, she decided to give it a shot. At first, she was going to be merely a part-time hiking buddy, but her role increased during the COVID days, when she had to focus on his needs and keeping him safe.

The Mountaineer told Anna he did not have long to live, so she started studying Emergency Medical Services at UNM Los Alamos. He exceeded his doctor's projections, so she earned her certificate but never had a chance to work in the field. The curriculum did prove useful, however, as she has saved the Mountaineer's life multiple times using her emergency response skills.



## THE PERFORMANCE

The World Beautiful explores Anna's friendship with Brown, which has developed over 5 ½ years. Anna portrays herself, while the Mountaineer is portrayed by professional actor Don Converse.

Since Anna sees herself mostly as a photographer, artist, and writer, the play incorporates visual elements in an unusual way. The performance is divided into four seasons, starting with winter and ending with fall. The two actors move around the stage to occupy different areas for each of these seasons, with Anna's own masterful photographs representing each season projected onto the stage.

Anna characterizes The World Beautiful as a piece exploring the journey to self-acceptance. When she first met the Mountaineer, she was at the end of her fertile years, hoping for a second child, while he was looking for a loving romantic

partner. Neither of them found what they were seeking, but their deepening friendship helped them make peace with their lives.

Since the Mountaineer loves musicals, Anna incorporates some original music in the play. Anna and Converse sing, accompanied by a small band of keyboard, drums, and bass.

## PHOTOGRAPHY

Though she knew she was autistic for at least a decade before, Anna was not formally diagnosed until age 42. She sees her art as an opportunity to explore the unique way she sees the world. This is why many of her photographs are "quads"-four pictures put together. "It's because it's not one image, to me there is so much going on... so much sensory information."

Anna "processes everything visually," and the play has over 100 photographs. They give the audience an opportunity to see this intense and life-forming relationship through the eyes of someone who sees things differently.

## PLANS

Anna has committed to stay with the Mountaineer for the rest of his life. After, who knows? She is focused on caregiving and pursuing her academic studies; and perhaps The World Beautiful will open up new opportunities she hasn't imagined yet.

Regardless of what she ends up doing, her openness to adventure and friendship will always be with her.

## WHEN YOU GO

The performance is scheduled at SALA Event Center for ONE PERFORMANCE ONLY. Sunday, February 18th at 3pm. Tickets to the event are \$15, and they can be purchased online through SALA. You can also livestream the play for \$5. <https://sala.losalamos.com/events/the-world-beautiful/>



# THE WORLD BEAUTIFUL

A multimedia live performance

Sunday February 18 at 3 PM

SALA Event Center

2551 Central Ave Los Alamos

Tickets \$15 at [sala.losalamos.com](http://sala.losalamos.com)

